

| Venue Hire

lighthouse

Arts & Entertainment | Poole

lighthouse
Arts & Entertainment | Poole

| Different every day

Contents

Why Choose Lighthouse?	3
Space Comparison	4
Space Locations	5
Concert Hall	6
Theatre	8
The Sherling Studio	10
Cinema	12
Gallery	14
Function Rooms	16
Our Other Spaces	20
Catering	21
Location	22
Contact	24

Lighthouse is not your ordinary venue. The largest multi-arts centre outside London, it's an extraordinary building in the heart of Poole.

With four auditoria, three contemporary meeting rooms, a cinema, an amphitheatre, an art gallery, three bars and a cafe, we offer a wide and all-encompassing selection of flexible spaces to accommodate a range of events.

Our spaces are available for live, virtual, and hybrid events – from meetings, workshops and conferences, to gala banquets, award ceremonies and exhibitions.

Lighthouse is fully accessible, offers event management and technical support, opportunities to brand any event space as your own, and a cost-effective network of suppliers to ensure we meet all your event needs.

We are proud to be South West England's 'Business Events Venue of the Year' 2022/23 and 2023/24.

SUPPORTED BY



AFFILIATED WITH



Registered Number 1368325 | Charity Registration Number 275961



Why Choose Lighthouse?

Lighthouse is the ONLY venue in the region that can provide:

- 8 versatile venues under one roof
- 4 auditoria, seating from 103 to 1,476 people
- Flexible raked seating in situ as standard
- 3 flexible function rooms; 2 with soundproofed (removable) dividing wall
- Ground floor art gallery
- 3 bars and ground floor cafe
- Lift access to all areas
- 7-minute walk from Poole train station
- 1,695 car parking spaces within a 10-minute walk
- 2,500 hotel rooms within a 10-minute walk
- Extensive opportunities for brand visibility
- Post-event entertaining and leisure options
- Event Management and technical support



Lighthouse's Global Rainbow installation (2021), supported by HSBC.



CHARITABLE STATUS

The revenue generated from venue hire contributes towards the long-term sustainability of our wide-ranging work.

It helps fund vital parts of Lighthouse's wider programme including taking outreach projects into the community, furthering our range of access projects, developing Lighthouse Academy, and supporting upcoming artists. It also allows us to continue providing the public with an eclectic array of productions, performances, shows, screenings and exhibitions.

Lighthouse is proud to be a charity that works alongside the communities of Poole and Bournemouth, passionately providing opportunities for learning and participation across all ages.

Help us make amazing things happen, right here in Poole.

Space Comparison

Estimated numbers for comfort & access

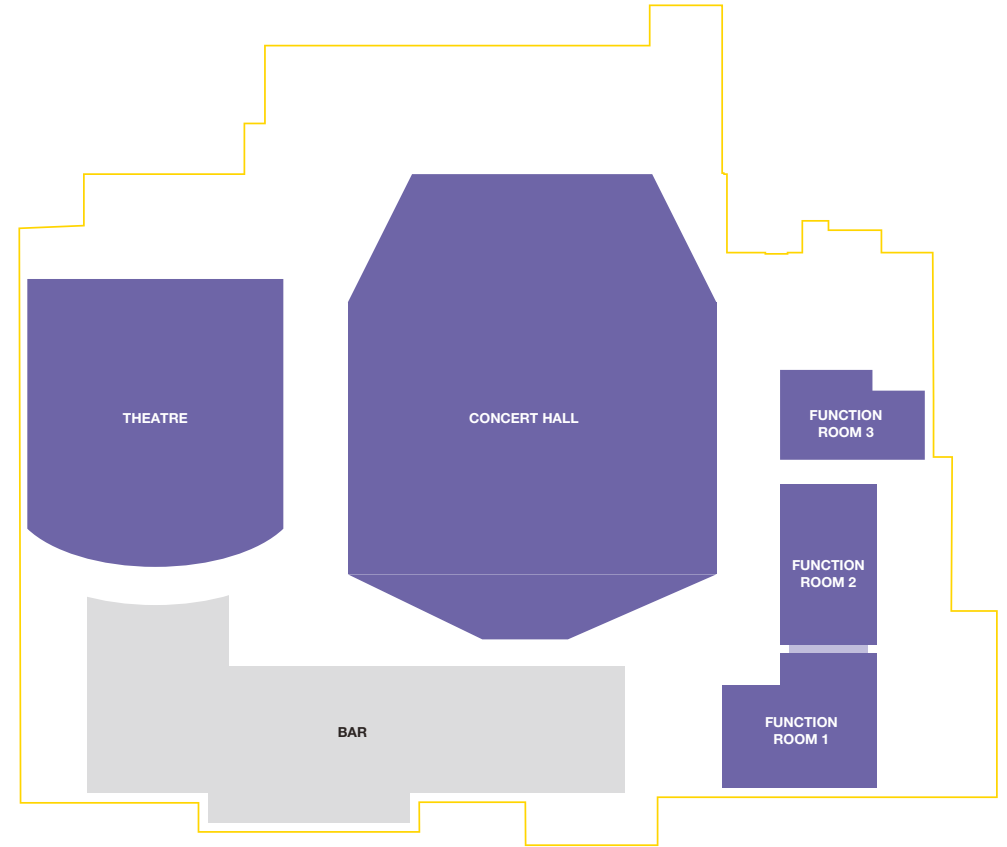
	Concert Hall	Theatre	Cinema	Sherling Studio	FR 1	FR 2	FR 1 & FR 2	FR 3	Gallery
CAPACITIES									
Theatre	1,476	669	103	120	80	100	150	40	-
Boardroom	-	-	-	-	30	38	-	20	-
Classroom	-	-	-	-	40	50	80	20	-
Banquet	500	On request	-	-	60	80	140	40	40
Drinks Reception	1,500	On request	-	-	100	120	200	60	50
Cabaret	350	On request	-	-	42	56	98	28	-
Exhibition	On request	-	-	-	On request	On request	On request	On request	-
FEATURES									
Screen and Projector	On request	Yes	Yes	On request	Yes	Yes	Yes	Yes	No
PA Available	Yes	Yes	On request	On request	On request	On request	On request	On request	On request
Blackout	Yes	Yes	Yes	Yes	Partial	Partial	Partial	Partial	No
Natural Daylight	No	No	No	No	Yes	Yes	Yes	Yes	Partial
DIMENSIONS									
Depth (m)	25.7m*	10.5m**	2.2m**	6.4m**	12.3m	15m	25.2m	11.9m	8.7m
Width (m)	29.8m*	10m**	8m**	6.8m**	8.7m	7.7m	12.3m	5.4m	12.9m
Area (sqm)	765.9m*	105m**	17.6m**	43.5m**	107m	115.5m	310m	64.3m	112.2m

FR - Function Room *Flat floor with stage **Stage/performance space dimensions

| Space Locations



Ground Floor



First Floor

Concert Hall

The Concert Hall is our largest space and is extraordinarily versatile; its unique floor mechanism enables it to transform from a fully raked auditoria, to a flat floor exhibition or banqueting space.

This feature makes the Concert Hall ideal for both seated and flat-floor events, including large-scale performances, conferences, trade exhibitions, product launches, gala dinners, awards ceremonies and more.



CAPACITY

1,476 seats

500 seated banquet style (flat floor)

350 cabaret style (flat floor with allowance for small stage)

1,500 reception (flat floor)

60 exhibition stalls (flat floor)

Number of wheelchair spaces is dependent on the seating configuration.

Lift access to all levels.

SUITABILITY

- Conferences
- Trade Exhibitions
- Product Launches
- Gala Dinners
- Award Ceremonies
- Graduation Ceremonies



Theatre

The Theatre at Lighthouse has played host to some of the UK's most famed actors, musicians, comedians and sporting stars.

Its sweeping auditoria provides great sightlines from all seats – with a capacity of 669 and a state-of-the-art cinema configuration, the Theatre makes for a great space to host a conference, product launch or private film screening. Home of our award-winning pantomime, it is also available for on-stage dining events for business or private hire.



CAPACITY

669 seats

8 wheelchairs

Lift access to all levels

Please ask re other seating configurations – capacities dependant on event

SUITABILITY

- Conferences
- Talks
- Film Screenings
- Award Ceremonies
- Graduation Ceremonies
- On-stage Dining



The Sherling Studio

The Sherling Studio is a recently refurbished studio theatre suitable for small-scale performances, private performances, presentations and talks.

Situated on the ground floor, it has bench seating on three sides providing an intimate setting with great acoustics. Seating is flexible; many of the seats can be removed to increase the presentation space.



CAPACITY

Seating for up to 120

6 wheelchairs

Flexible configurations

SUITABILITY

- Small-scale Performances
- Small-scale Conferences
- Presentations
- Talks
- Filming



Cinema

A hidden gem tucked away on the ground floor of Lighthouse, our 103-seat cinema is perfect for screenings, presentations and keynote style talks.

Host an intimate branded screening, followed by a presentation or Q&A session without your guests having to leave their seats. Alternatively, the cinema may be hired as a private cinema experience with colleagues or friends. Our Studio Bar in the cinema foyer may be opened for exclusive use before or after your event, serving a range of food & drinks.



CAPACITY

103 seats

6 wheelchairs

SUITABILITY

- Film Screenings
- Conferences
- Presentations
- Talks



Gallery

Situated on the ground floor of Lighthouse, our main Gallery space continues to showcase an exciting array of visual artists from across the region and beyond.

This versatile space is ideal for hosting drinks receptions or private dining events. Elevate your event experience by entertaining VIP guests as part of a building-wide hire or prior to enjoying corporate hospitality at one of our shows.



CAPACITY

Private Dining	40
Drinks Reception	60

SUITABILITY

- Private Dining
- Drinks Receptions
- Corporate Hospitality
- Private Viewings

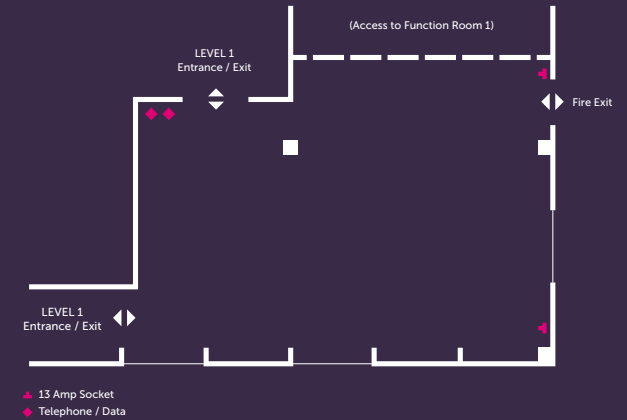


Function Room 1

Function Room 1 is a versatile room, flooded with natural daylight.

Its flexible layout makes it ideal for a range of events, and its proximity to other areas allows for easy movement throughout the building. Adjoining Function Room 2, its soundproofed dividing wall may be removed to create a larger space.

The room has an inbuilt HD projector and 2.6m electric projector screen, controlled via iPad. Perfect for independent use, or as a breakout space for larger events.



CAPACITY

Reception	100
Theatre	80
Banquet	60
Cabaret	42
Classroom	40
Boardroom	30

SUITABILITY

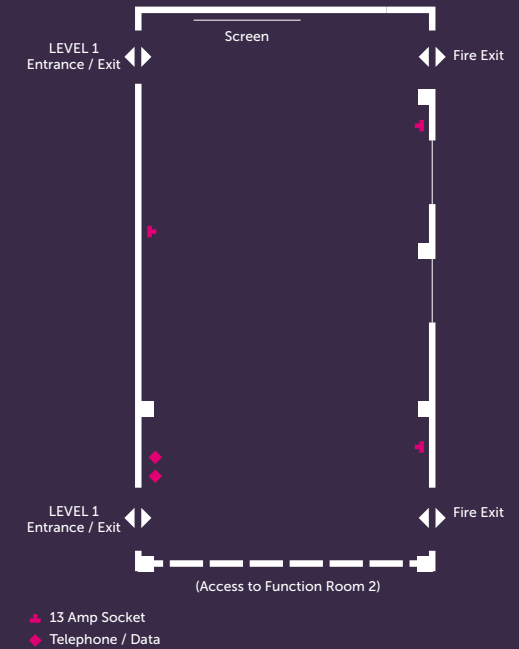
- Meetings
- Conferences
- Training Days
- Workshops
- Breakout Space
- Dining
- Drinks Receptions
- Corporate Entertaining

Function Room 2

Function Room 2 is our largest Function Room and is the perfect venue for a range of meetings, functions, and larger gatherings.

Its flexible layout makes it ideal for a range of events, and its proximity to other areas allows for easy movement throughout the building. Adjoining Function Room 1, its soundproofed dividing wall may be removed to create a larger space.

The room has an inbuilt HD projector and 2.6m electric projector screen, controlled via iPad. Perfect for independent use, or as a breakout space for larger events.



CAPACITY

Reception	120
Theatre	100
Banquet	80
Cabaret	56
Classroom	50
Boardroom	38

Exhibition
Capacity dependent on requirements. Please request.

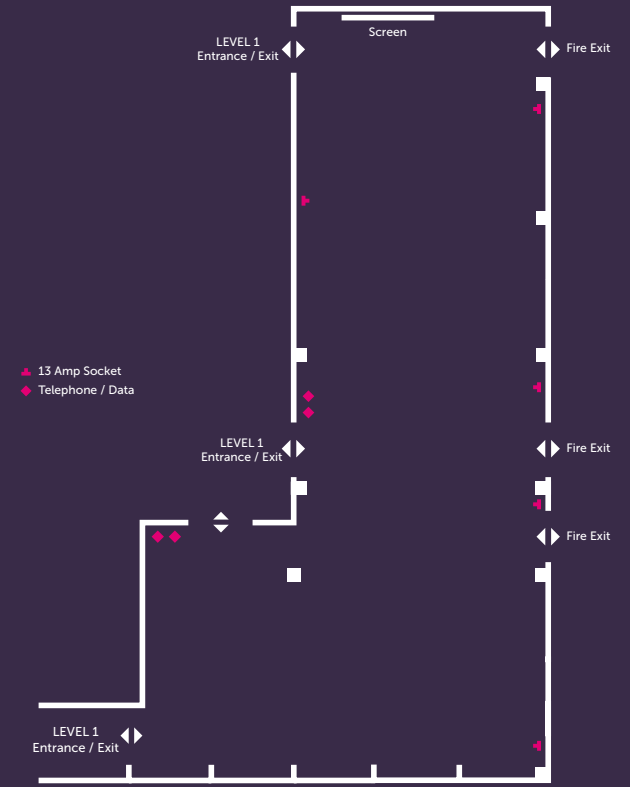
SUITABILITY

- Meetings
- Conferences
- Training Days
- Workshops
- Breakout Space
- Dining
- Drinks Receptions
- Corporate Entertaining

Function Rooms 1 & 2

Function Rooms 1 & 2 are separated by a partition wall, which can be removed to make one large open space – excellent for smaller scale tradeshow and exhibitions.

As an L-shaped room, it also works well for meetings, with the ability to serve refreshments within the same area. Both rooms may be adapted to serve as a private dining space or for reception area.



CAPACITY

Reception	200
Theatre	150
Banquet	140
Classroom	80
Exhibition	Capacity dependent on requirements. Please request.

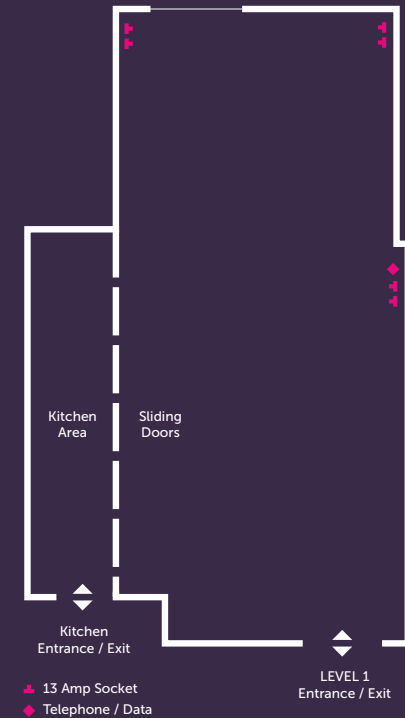
SUITABILITY

- Conferences
- Training Days
- Workshops
- Dining
- Drinks Receptions
- Corporate Entertaining

Function Room 3

Function Room 3 is a smaller, more intimate space, perfect for board meetings and workshops.

There is a hidden kitchen area behind sliding doors, making this space also suitable as a food preparation area for large scale gala dinners, due to its proximity to the Concert Hall.



CAPACITY

Reception	60
Theatre	40
Banquet	40
Cabaret	28
Classroom	20
Boardroom	20

SUITABILITY

- Board Meetings
- Training Days
- Workshops
- Breakout Space
- Prep area/office in conjunction with large scale events

Use of the 'hidden' kitchen area is included in the hire rate.

Our Other Spaces



BEACON

The Beacon Café at Lighthouse offers a welcoming spot for your guests or delegates to enjoy a variety of refreshments, light meals, and snacks in a relaxed atmosphere.



BARS

Lighthouse boasts three bars, one on each floor, offering your guests a diverse selection of drinks and ensuring refreshment is always within easy reach.



FOYERS/GALLERY

The spacious foyer and additional gallery areas at Lighthouse are perfect for hosting drinks receptions, providing a warm and welcoming atmosphere for guests to mingle and enjoy.



AMPHITHEATRE

The Amphitheatre at Lighthouse, home to Lighthouse Outside events, offers a unique outdoor space for guests to enjoy performances or gather in an open-air setting.

Catering

We work closely with a range of approved suppliers to make sure your event is delivered to the highest possible standard.

Our in-house catering team can provide lunches, light bites and refreshments for up to 120 people.

Alternatively, our recommended caterers provide a varied range of catering options from delicious street food to elegant fine dining. All our suppliers use high quality, fresh ingredients ensuring outstanding quality throughout. We will happily make sure all dietary requirements are accommodated.



“Having worked with the team at Lighthouse for the last 6 years, I have been hugely impressed by the services offered and the ease of working, from planning to delivery. Above all, the fantastic venue team provide a professional service with a personal touch that ensures the success of our events.”

Jason Fawkes, Ceremonies Manager,
Open University

Location

Poole benefits from extensive travel options and is well connected to London and the rest of the country, allowing your employees, clients, and guests to find their perfect travel solution.

BY ROAD

Access by car can be made via the A338 to the east or A35 to the west.

Parking is available in the nearby Dolphin Shopping Centre multi-story car park (BH15 1TA), the Everyone Active public car park (BH15 1TP), and the Seldown public car park (BH15 1SN).

Additionally, there are on-street parking spaces located around Poole Park alongside a number of spaces within the park itself.

There are six accessible parking spaces at the front of Lighthouse. Additional accessible spaces can be found on Seldown.

BY RAIL

Southwest Trains run a half hourly service to/from Poole–London Waterloo with a journey time of around 2 hours. For the latest train timetables visit www.nationalrail.co.uk.

BY BUS

National Express operates regular services to Southampton, London and beyond.

Both Poole Bus Station (local routes) and Poole Coach Station (national routes) are situated directly opposite Lighthouse.

BY AIR

For those travelling from further afield, Bournemouth International Airport is just under 10 miles from Lighthouse.

WHAT TO SEE AND DO

Lighthouse is surrounded by some of Dorset's most breathtaking locations, with an abundance of things to see and do; from sailing and windsurfing to kayaking and paddleboarding. On land, there are miles of beautiful trails to walk or cycle, an array of golf courses, adrenaline-fuelled climbing and abseiling, and some of the country's most striking castles and stately homes.

For more information, visit:

www.pooletourism.com

www.coastwiththemost.co.uk

www.visit-dorset.com

ADDRESS

Lighthouse, Arts and Entertainment
21 Kingland Road, Poole,
Dorset, BH15 1UG

FIND US







CONTACT

If you would like to know more about any of the spaces featured, or to make a booking, please contact:

Lucy Funnell
01202 781319

lucy.funnell@lighthousepoole.co.uk
www.lighthousepoole.co.uk/venue-hire



lighthouse
Arts & Entertainment | Poole

SUPPORTED BY



AFFILIATED WITH